

Bass Guitar

HAIG AND HAIG

Clark Terry

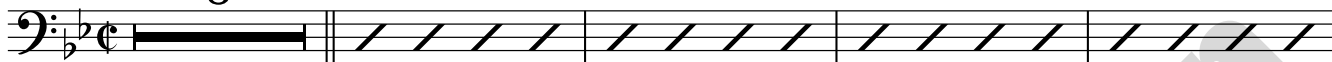
Arranged by Steve Waterman.

Solo Tpt

$\text{♩} = 250$

8

B♭maj⁷ G⁷ Cm⁷ F⁷ Dm⁷ G⁷ Cm⁷ F⁷



13 B♭maj⁷ B♭⁷/D E♭maj⁷ E♭^{o7} Cm⁷ F⁷ B♭maj⁷

17 D⁷ G⁷

21 C⁷ F⁷

25 B♭maj⁷ G⁷(♭9) Cm⁷ A⁷(♭9) Dm⁷ G⁷ Cm⁷ F⁷

29 B♭maj⁷ B♭⁷/D E♭maj⁷ E♭^{o7} Cm⁷ F⁷ B♭maj⁷ F¹³(#11)

33 B♭maj⁷ G⁷#⁹ Cm⁷ Cm⁷/F B♭maj⁷ F¹³(#11)

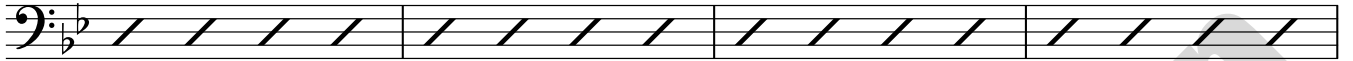
37 B♭maj⁷ G⁷#⁹ Cm⁷ Cm⁷/F B♭maj⁷

41 B♭maj⁷ G⁷#⁹ Cm⁷ Cm⁷/F B♭maj⁷

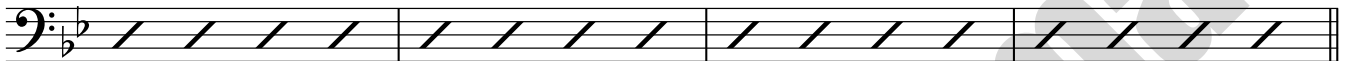
45 B♭maj⁷ G⁷#⁹ Cm⁷ Cm⁷/F B♭maj⁷



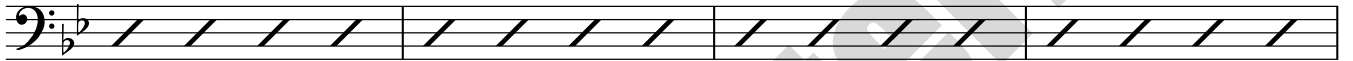
49 D⁷ G⁷



53 C⁷ F⁷ F¹³(#11)



57 B♭maj⁷ G⁷#⁹ Cm⁷ Cm⁷/F B♭maj⁷ F¹³(#11)

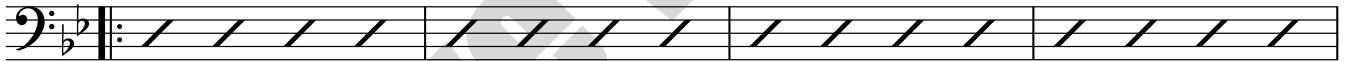


61 B♭maj⁷ G⁷#⁹ Cm⁷ Cm⁷/F B♭maj⁷

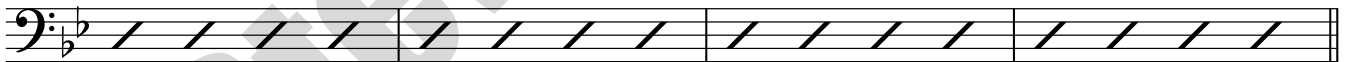


Open for solos - backings on cue

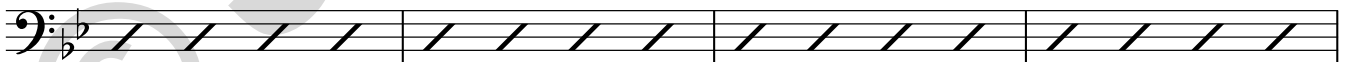
65 B♭maj⁷ G⁷ Cm⁷ F⁷ Dm⁷ G⁷ Cm⁷ F⁷



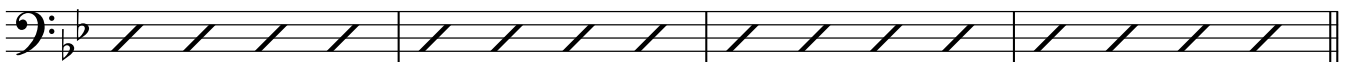
69 B♭maj⁷ B♭⁷/D E♭maj⁷ E♭^{o7} Cm⁷ F⁷ B♭maj⁷



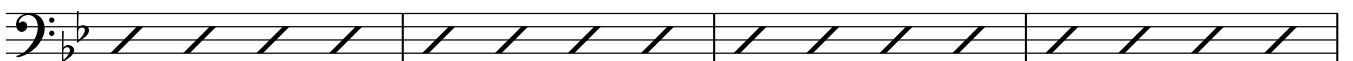
73 B♭maj⁷ G⁷ Cm⁷ F⁷ Dm⁷ G⁷ Cm⁷ F⁷

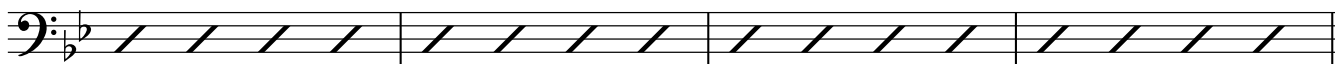
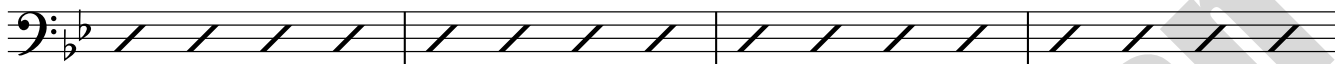
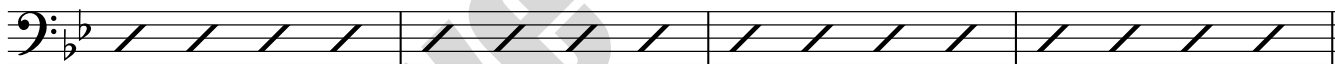


77 B♭maj⁷ B♭⁷/D E♭maj⁷ E♭^{o7} Cm⁷ F⁷ B♭maj⁷



81 D⁷ G⁷



85 C⁷F⁷89 Bbmaj⁷ G⁷ Cm⁷ F⁷ Dm⁷ G⁷ Cm⁷ F⁷93 Bbmaj⁷ Bb⁷/D Ebmaj⁷ Eb^{o7} Cm⁷ F⁷ Bbmaj⁷**Backing 1**97 Bbmaj⁷ G⁷(b⁹) Cm⁷ Cm⁷/F Dm⁷ G⁷ Cm⁷ F⁷*mf*101 Bbmaj⁷ Bb⁷/D Ebmaj⁷ Eb^{o7} Cm⁷ F⁷ Bbmaj⁷105 Bbmaj⁷ G⁷(b⁹) Cm⁷ Cm⁷/F Dm⁷ G⁷ Cm⁷ F⁷*mf*109 Bbmaj⁷ Bb⁷/D Ebmaj⁷ Eb^{o7} Cm⁷ F⁷ Bbmaj⁷113 D⁷G⁷